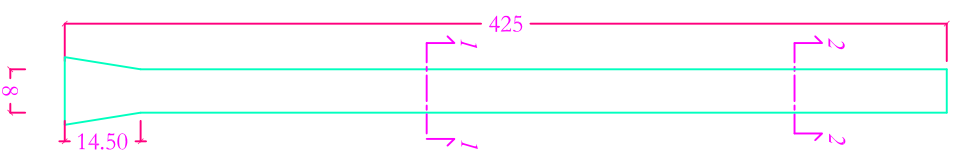
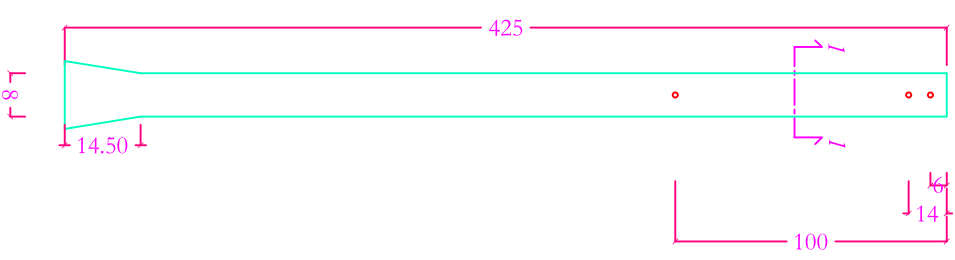


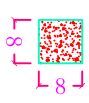
VISTA FRONTALE



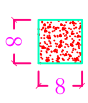
VISTA LATERALE



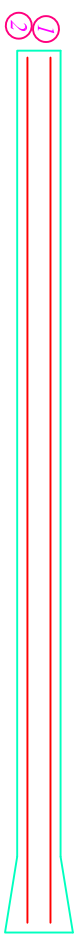
VISTA SEZIONE 1-1



VISTA SEZIONE 2-2



ARMATURA



- ① 205 L=420 cm
- ② 205 L=420 cm

MATERIELE		IMPRESA PREPARED/STRUTTE	
ClS C20/25		SCALZO BUILDING	
Acciaio B450C		GRANITINI CP	
		VIA PALERMO, 38	
		TEL. (091) 3996	
SCHEDE TECNICA			
PALETTO SERRA 8x8x425 cm			
Data	Superficie (mq)	Volume (ClS (mc))	Peso (Kg)
25/03/'21	/	0,027	59,84
Config	Lunghezza (mq)	Lunghezza (mq)	Altezza (mq)
P8x8x425	8	8	425
Pagina 1 di 1		REI	VISTO/RESPONSABILE
		n.r.	