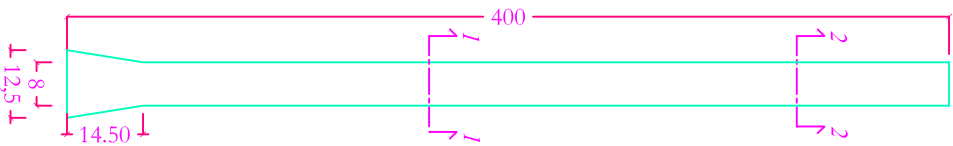
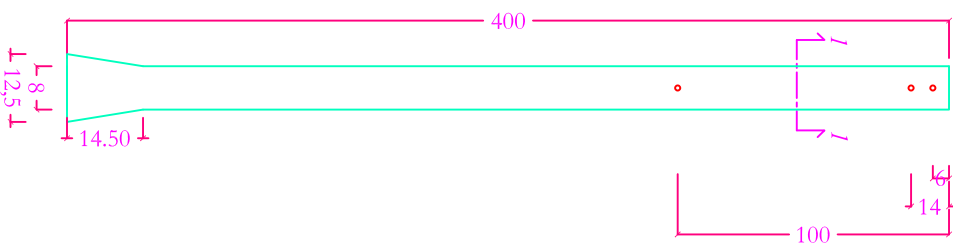


VISTA FRONTALE



VISTA LATERALE



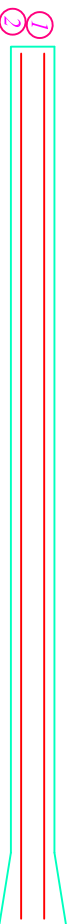
VISTA SEZIONE 1-1



VISTA SEZIONE 2-2



ARMATURA



① 205 L=395 cm

② 205 L=395 cm

MATERIELE  
ClS C20/25  
Acciaio B450C

IMPRESA PREPARED/STRUTTE  
SCALZO BUILDING  
GRANIERI CP  
VIA PALERMO, 38  
TEL. (0922) 2996

SCHEMI TECNICI  
PALETTO SERRA 8x8x400 cm



Data	Superficie (mq)	Volume (ClS (mc))	Peso (Kg)
25/03/21	/	0,025	56,32

Config	Tangenza (mq)	Tangenza (mq)	Altezza (mq)
P8x8x400	8	8	400