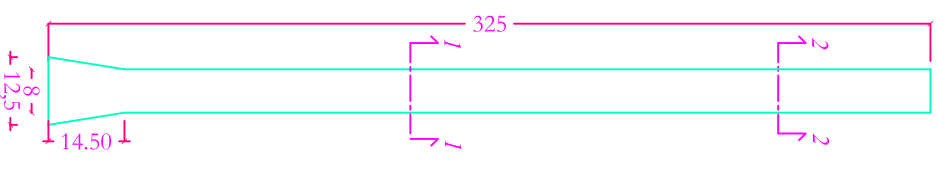
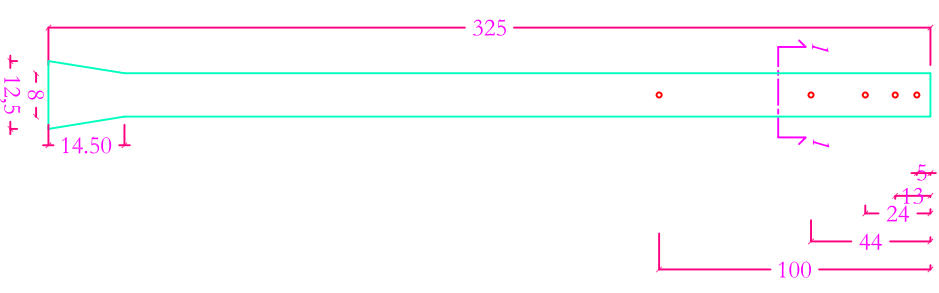


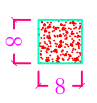
VISTA FRONTALE



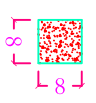
VISTA LATERALE



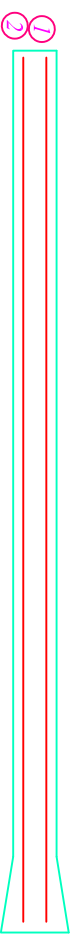
VISTA SEZIONE 1-1



VISTA SEZIONE 2-2



ARMATURA



- ① 2Ø5 L=320 cm
- ② 2Ø5 L=320 cm

MATERIELE		FORNITORE		
ClS C20/25 Acciaio B450C		SCALZO BUILDING VIA PALERMO, 38 TEL. (0933) 28446		
SCHEDE TECNICA				
PALETTO SERRA 8x8x325 cm				
Data	Superficie (mq)	Volume (ClS (mc))	Peso (Kg)	
25/03/'21	/	0,021	45,76	
Config	Lunghezza (mq)	Lunghezza (mq)	Altezza (mq)	
P8x8x325	8	8	325	
REI	n.r.		VISTO RESPONSABILE	