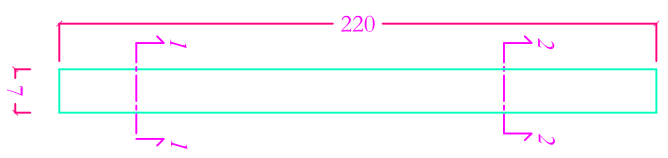
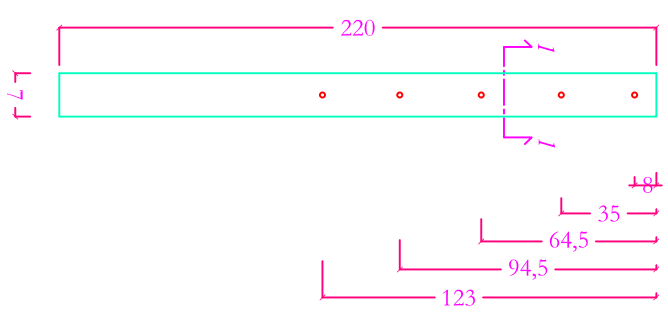


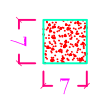
VISTA FRONTALE



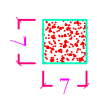
VISTA LATERALE



VISTA SEZIONE 1-1




VISTA SEZIONE 2-2



ARMATURA



- ① 204 L=215 cm
- ② 204 L=215 cm

MATERIALE		DIMENSIONI		MATERIALE		 SCALZO BUILDING VIA PALESTRA, 38 TEL. (095) 28446	
ClS C20/25		Acciaio B450C		FORMOSA PREFABBRICAZIONE SCALZO BUILDING VIA PALESTRA, 38 TEL. (095) 28446			
SCHEDE TECNICA				PALETTO 7x7x220 cm			
Data	Superficie (mq)	Volume (ClS (mc))	Peso (Kg)				
14/04/'20	/	0,011	23,71				
Config	Lunghezza (mm)	Lunghezza (mm)	Altezza (mm)				
P7x7x220	7	7	220				
Pagina 1 di 1		REI	n.r.	VISTO RESPONSABILE			