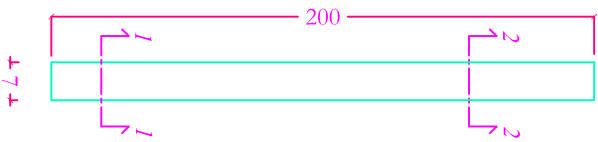
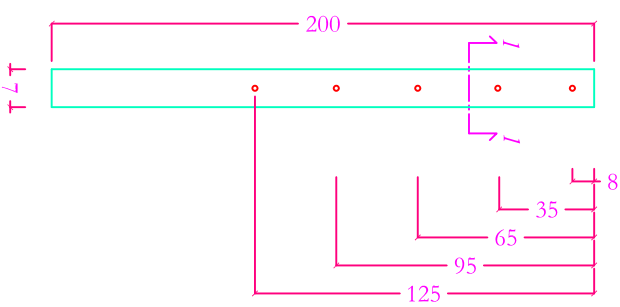


VISTA FRONTALE



VISTA LATERALE



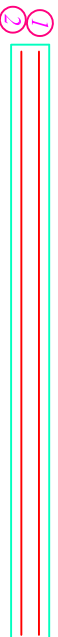
VISTA SEZIONE 1-1



VISTA SEZIONE 2-2




ARMATURA



① 204 L=195 cm

② 204 L=195 cm

MATERIELE		DIPLOMA PRESENTAZIONE		 SCALZO BUILDING CAGLIARI (CA) VIA PALERMO, 38 TEL. (070) 299999
Cis C20/25 Acciaio B450C		SCALZO BUILDING		
SCHEDE TECNICA				
PALETTO 7x7x200 cm				
Data	Superficie (mq)	Volume (CIS) (mc)	Peso (kg)	
14/04/21	/	0,01	21,0	
Codifica	Lunghezza (mq)	Lunghezza (mq)	Altezza (mq)	
P7x7x200	7	7	200	
Pagina 1 di 1		REI	VISTO RESPONSABILE	
		n.r.		