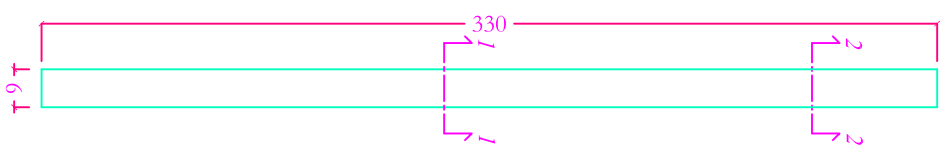
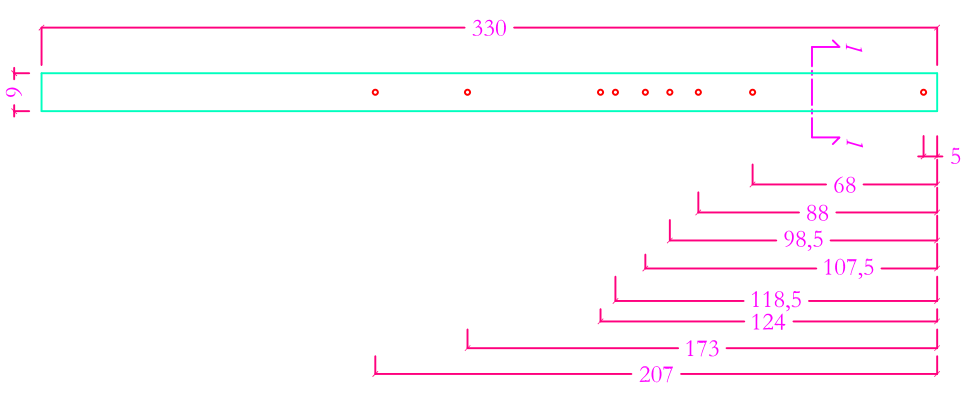


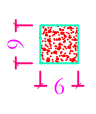
VISTA FRONTALE



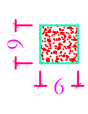
VISTA LATERALE



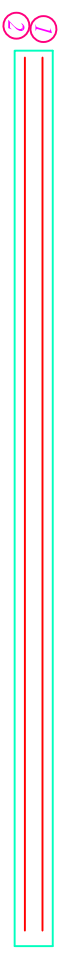
VISTA SEZIONE 1-1



VISTA SEZIONE 2-2



ARMATURA



- ① 2Ø4 L=325 cm
- ② 2Ø4 L=325 cm

MATERIELE		DIMENSIONI PRELIMINARI		
Cl. C20/25 Acciaio B450C		SCALZO BUILDING CANTIERI C.P. VIA PALERMO, 38 TEL. (091) 2496		
SCHEMI TECNICI				
PALETTO 6x6x330 cm				
Data	Superficie (mq)	Volume (Cl. (mc))	Peso (kg)	
25/03/21	/	0,012	26,13	
Config.	Lunghezza (mm)	Lunghezza (mm)	Altezza (mm)	
P6x6x330	6	6	330	
REI	n.r.		VISTO RESPONSABILE	
Pagina 1 di 1				